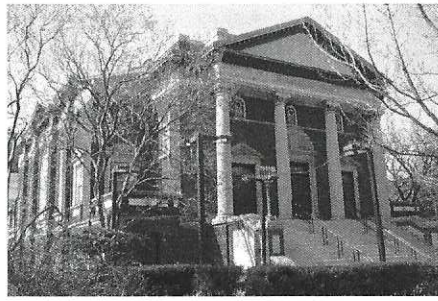


#2 Free Synagogue of Flushing

After leaving the post office, go East one block on Sanford Avenue to the Free Synagogue of Flushing (136-23 Sandford Avenue), on the northwest corner of Sandford Avenue and Kissena Boulevard. The entrance faces Kissena Boulevard.



The Free Synagogue of Flushing was founded in 1917 on Sanford Avenue by the Hebrew Women's Aid Society, in keeping with the philosophy of the first Free Synagogue, the Stephen Wise Free Synagogue in Manhattan. It is the oldest Reform congregation in Queens.

The white Victorian-style building was moved in 1926 to the Sanford Avenue frontage of the synagogue to make way for a larger sanctuary, the present Free Synagogue of Flushing. This neoclassical building was designed by Maurice Courland, a specialist in synagogue design, and features a massive portico supported by four Ionic pillars. Ascending the stately steps is magnificent sanctuary where dark green pilasters support the walls upon which rest the enormous dome. The building is beautified with ornamental Judaic motifs, such as a seven-branched menorah right outside the doors of the synagogue. Tiffany style stained glass windows crafted in Czechoslovakia bathe the sanctuary in rich, radiant colors. The windows depict Noah's Ark, the lions of Judah, great swirls of leaves and vines and delicate flowers used in the Sukkot prayer, and the two hands of the Priestly Blessing.

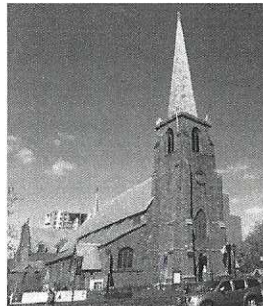
In the center of the domed ceiling that covers the entire sanctuary is a smaller stained-glass dome designed around a Star of David and intricate, gold-leaf filigree, hand-turned and carved, graces the wood that is a dark green color.



freesynagogueflushing.org

#3 Saint George's Episcopal Church

After leaving the synagogue go North on Kissena Boulevard until it merges with Main Street by the LIRR. Continue North on Main Street to one block past the #7 Subway Line. Saint George's Episcopal Church (135-32 38th Ave.) is on the West side of Main Street between 38th and 39th Avenues.



Questionnaire

1) Which signer of the Declaration of Independence lived in Flushing?

2) Where is city's oldest house of worship in continuous use and the second oldest in the nation?

3) Who were the three people that Governor Peter Stuyvesant banished from Nieuw Amsterdam?

4) On what date and at what site was the Flushing Remonstrance issued?

5) When and where was Daniel Carter Beard born?

6) Who designed the "Standing Liberty" quarter?

7) Who invented the carbon filament for Edison's incandescent electric light?

8) What was the first living plant given NYC landmark status?

9) At the intersection of Roosevelt Avenue and Bowne Street, what were the names of these two streets when Daniel Carter Beard lived in Flushing?
